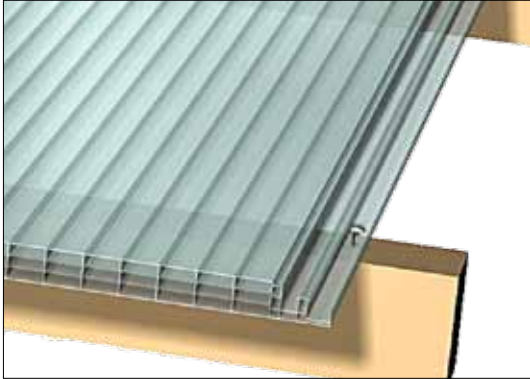
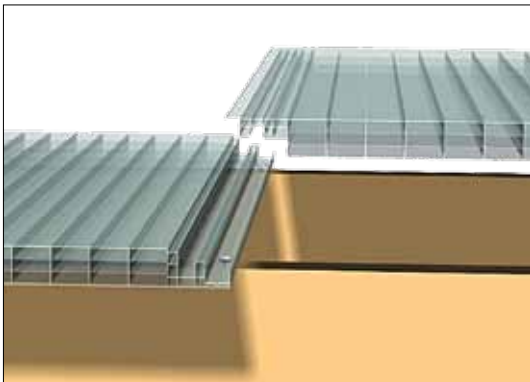


## Mizar assembly procedure



Fasten the panel on each purlin with a single screw.



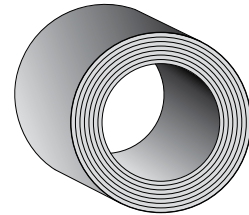
Slot on the next panel, making sure you line up the "male and female" profiles before pressing down. Make sure the panel is coupled along its entire length.



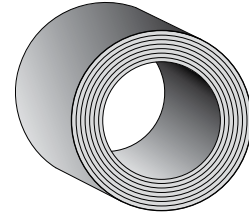
Seal the end of the MIZAR 16 mm sheet with aluminium adhesive tape.



Finish with aluminium or steel edging.



Aluminium adhesive tape  
38 mm x 50 m



Aluminium adhesive breather tape  
38 mm x 50 m

All information, advice or suggestions provided by EMP SA, such as sheet performance, application projects or use of our materials, are given in good faith, to the best of our knowledge. Nonetheless, given that EMP SA has no control over the use to which third parties put our material, we disclaim responsibility towards any purchasers, users or third parties for any service rendered or for the properties or performance of the material. Individual users of the material are required to perform their own trials to determine whether the material is suitable for the specific use in question. EMP SA reserves the right to change any kind of data featured herein at any time without prior notice.

cod.900801 copyright Iso 05-2011

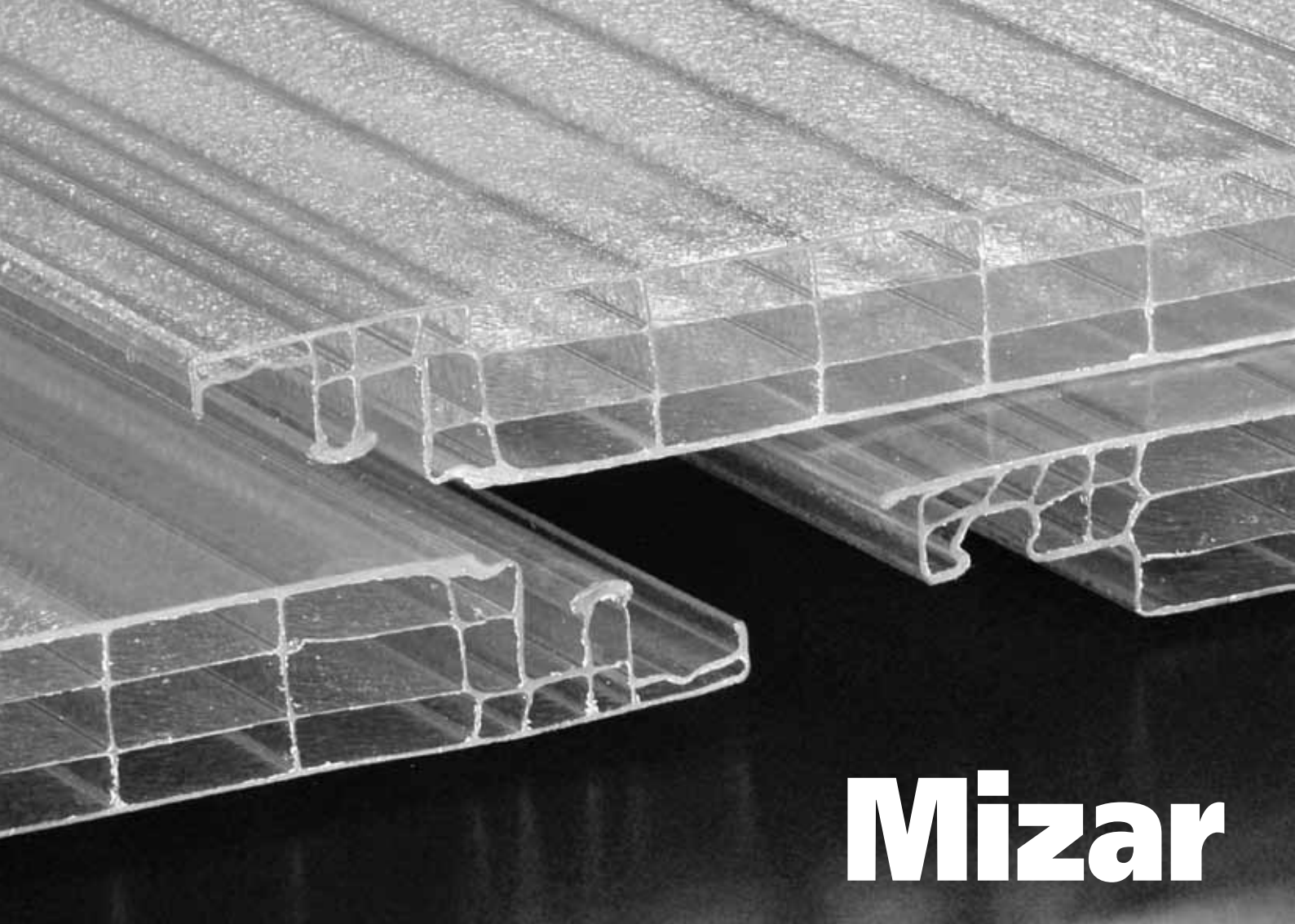


**EMP Estrusione  
Materiali Plastici SA**

Via Lische 11/13  
6855 Stabio - Switzerland  
tel. +41.(0)91.6417272  
fax +41.(0)91.6417295  
empdigital@macrolux-emp.com  
www.macrolux-emp.com



**AZIENDA CON SISTEMA DI GESTIONE  
PER LA QUALITÀ CERTIFICATO DA DNV  
= UNI EN ISO 9001:2008 =**



# Mizar

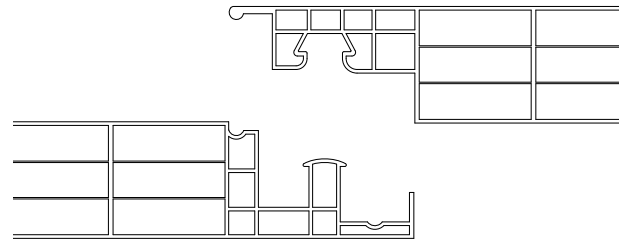
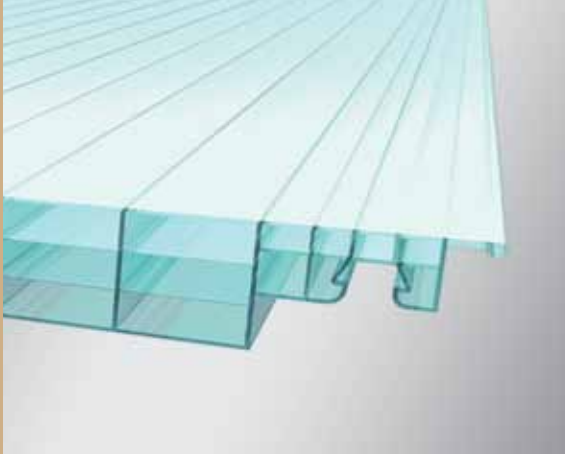
## Systems

Self-supporting polycarbonate multiwall system for producing roofing on industrial, commercial and domestic buildings.

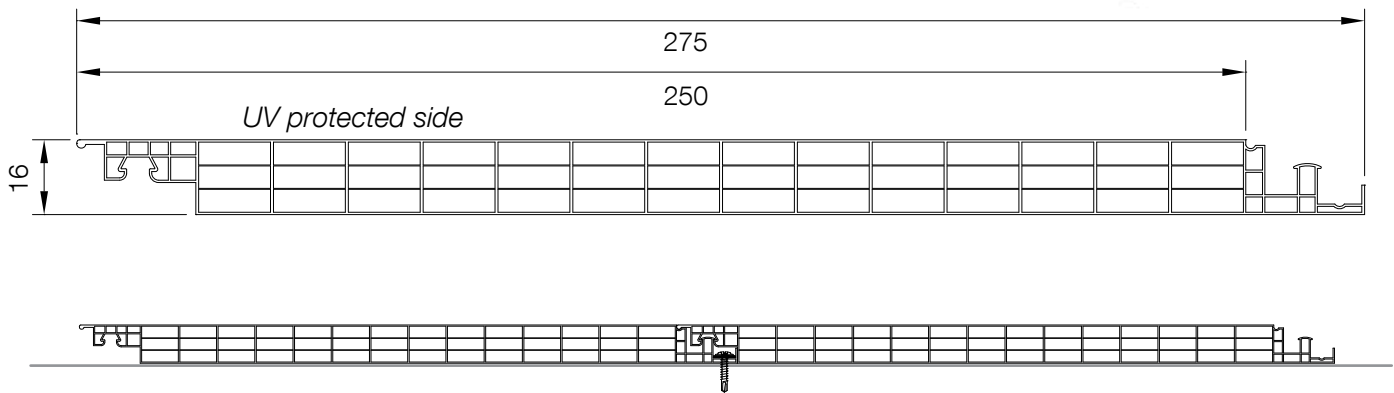
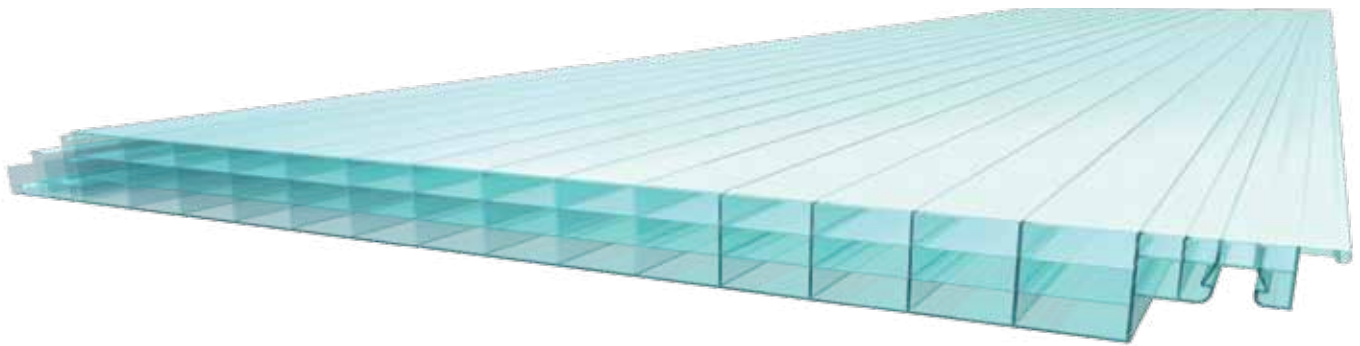


## Mizar

16 mm



four walls (three chambers)



Detail of sheet/sheet coupling with slot-on and screwed fastening

The Mizar system is used in roofing applications and is suitable for use on new buildings incorporating the latest design concepts as well as in industrial refurbishments. The system comprises multiwall polycarbonate 4 walls panels. The standard 16 mm thickness delivers cost effectiveness, excellent structural performance and adaptability to meet the various design opportunities that are constantly presented by building projects, making it possible to produce expansive translucent surfaces. The system is formed by slotting together the panels, which have "male and female" profiles for a perfect fit; it is best to complete installation with aluminium framing profiles (not provided by EMP SA).

The Mizar system offers an excellent combination of performance properties, such as: high capacity to withstand evenly distributed loads; efficient heat insulation; effective resistance to critical weather conditions; quick and easy installation; low transport costs. To reduce the condensation effect and build-up of impurities inside the cells, it is advisable to seal the ends with aluminium tape. The Mizar system is certified in conformity with the latest European industry standards. A series of optional accessories completes the Mizar system product range, making it a user-friendly system that is quick and easy to install.

Characteristics	Unit of measurement	Mizar 16 mm
<b>Geometric characteristics</b>		
thickness	mm	16
structure	type	four walls (3 chambers)
width	mm	275
module width	mm	250
sheet length	mm	4000 - 5000 - 6000
<b>Technical characteristics</b>		
thermal transmittance (U)	W/m <sup>2</sup> K	2,1
service temperature range*	°C	- 40 / + 130
thermal expansion	$\frac{\text{mm}}{\text{m } ^\circ\text{C}}$	0,065
light transmission (LT) clear	%	80 <sup>**</sup>
light transmission (LT) opal	%	70 <sup>**</sup>
UV protection	YES/NO	YES
heat welding	YES/NO	NO
guarantee	years	10

\* The maximum service temperature is based on the RTI (Relative Thermal Index) according to UL 746B – typical value of high molecular weight polycarbonate -

\*\* Values tested in-house

## Mizar

### Specifications

Roofing produced with multiwall polycarbonate Mizar system.

**Thickness 16 mm**

**Width 275 mm, module width 250 mm**

**UV protection**

**Neutral or opal colour, with satin effect**

**U" value: 2,1 W/m<sup>2</sup> K**

**Fire performance, Euro class B s1 d0**

### Two supports-load chart

